



TIPS FOR Making Ethical Choices WHILE TRAVELLING

three tree-hill

history • nature • culture



1. RESPECT

Respect the local culture & learn to say hello in Zulu "Sawubona"

Treat people as you wish to be treated

Drive slowly past pedestrians if you are on a gravel road. They don't want to swallow your dust!



2. CHILDREN

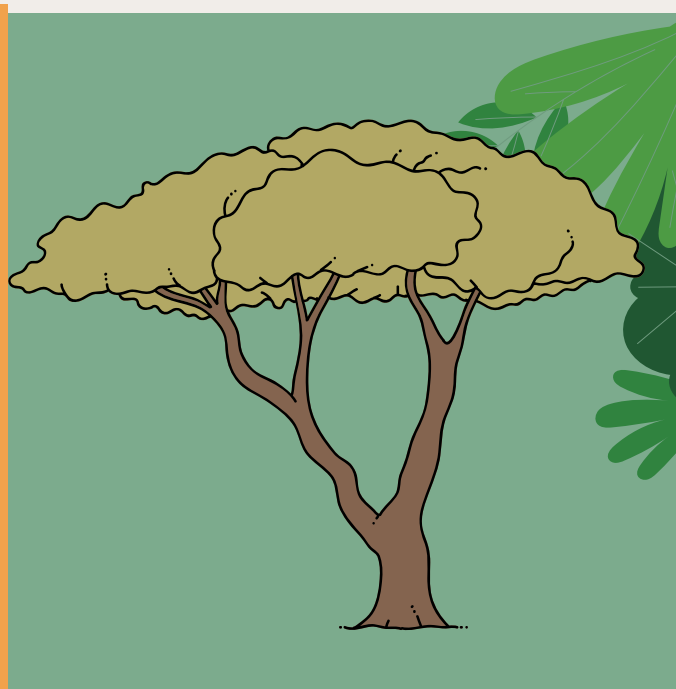
Treat children as you would wish your children to be treated by strangers

Do not hand out money or sweets to children. Do not photograph children.

Do not partake in any sexual exploitation of children. Do not interrupt educational sessions at schools. Report any suspected abuse of children. Smile & wave!

3. ENVIRONMENT

Be respectful of the delicate environment you are travelling in. Travel with your own water flask to avoid discarding unnecessary plastic. Do not litter anywhere. If you use the bush as your lavatory, be sure to take your tissue with you! Do not pick any flowers or damage any vegetation. Do not scratch or mark any rocks, trees or monuments.



4. SOUVENIRS, ARTEFACTS & FOOD

Do not buy or eat any animal or plant products that are endangered

Do not negotiate with local crafters.

Pay their price!

Please do not remove any military or historical or archeological artefacts from any of the sites you visit.

5. ANIMALS

Do not pay for photos with animals meant for the wild.

Don't feed, touch or pick up wild animals

Avoid places that keep wild animals in captivity for human enjoyment

Where there are animals, make sure they are adhering to the 5 Freedoms

below/on the reverse



5 FREEDOMS for

ANIMAL WELFARE



three tree-hill

history • nature • culture

Should you visit a place that does have animals, make sure they follow the basis of good animal welfare...

1. GOOD FEEDING

Animals should have access to adequate food & water

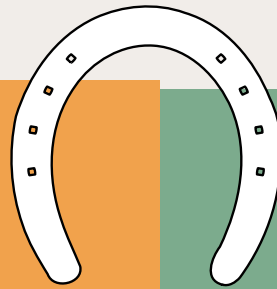


2. GOOD HOUSING

Animals should have enough space to move

They should be protected from the elements, where necessary

They should be comfortable when resting

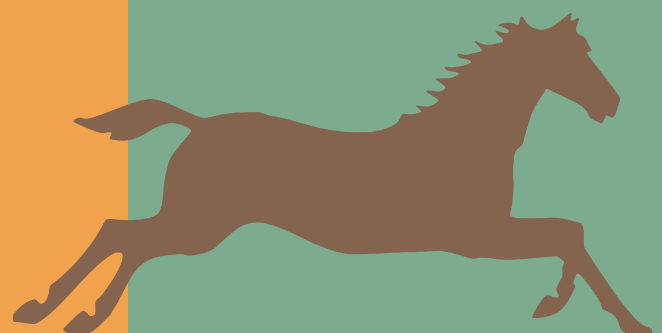


3. GOOD HEALTH

Animals should be free of disease

Free of injuries

Absence of pain induced by poor management



5. PROTECTION FROM FEAR & DISTRESS

Absence of general fear, distress & apathy

Ability to seek privacy or refuge

Absence of surgical physical modification of the skin, tissue, bone structure or teeth other than for the purpose of genuine medical treatment.



4. APPROPRIATE BEHAVIOUR

Expression of natural behaviour

Expression of social behaviour

Good human-animal relationship

Positive emotional state



GUIDELINES for CAPTIVE WILDLIFE



three tree hill
history • nature • culture

We believe that, managed responsibly, captive wildlife facilities can play a positive role in tourism; educating visitors about conservation, rehabilitating injured and abandoned wildlife and supporting genuine conservation efforts. Below are basic guidelines to help you make a good choice.

1. LEGAL COMPLIANCE

The facility should be in possession of all relevant international, national and provincial legal permits for keeping wildlife. The facility should comply with national and international laws relevant to the trade in wildlife and plant species OR products made from wildlife and plant species.

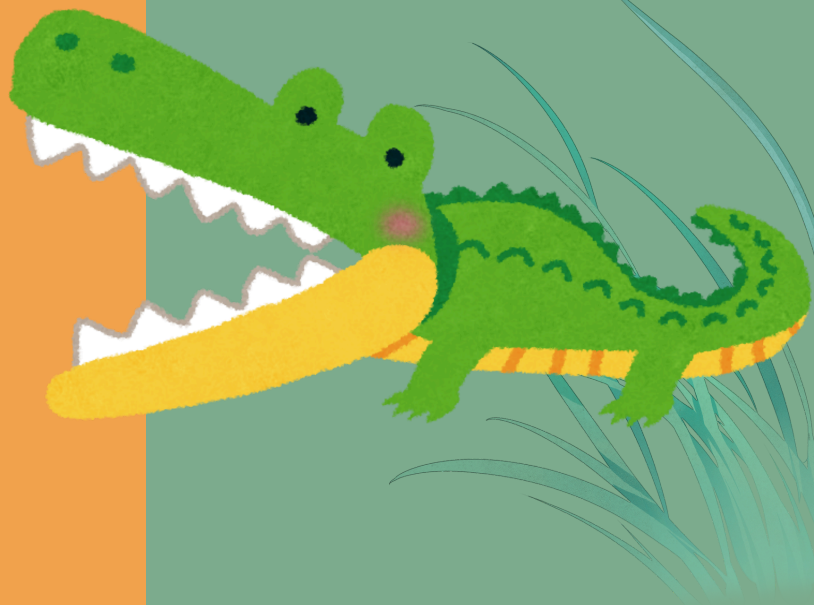


2. CONSERVATION

The facility should not have obtained animals from the wild, unless for a justifiable conservation need, or for legitimate rescue purposes. A declared sanctuary should not engage in wildlife trade or breeding activities, nor allow contact between animals and visitors.

3. ANIMAL WELFARE

The facility should conduct good animal welfare in terms of feeding, housing, health, enabling appropriate behaviour, and providing protection from fear. The animals should not be encouraged to behave in a way that is not natural and / or innate to their species for entertainment purposes



4. HUMAN SAFETY

The facility should minimise the risk of human injury by having a comprehensive safety protocol in place. A visitor code of conduct should be in place that prioritises visitor safety. Adequate public liability insurance should be in place..



5. TRANSPARENCY

The facility should make it clear whether it engages in wildlife breeding or trade by communicating this in its public literature, such as its website. The facility's conservation claims should be endorsed by an independent conservation body that is nationally or internationally recognised..

